

KONE CMD 2015

Introduction to KONE's supply chain operations in China

Janne Kuisma, Head of Supply Operations China

September 25, 2015

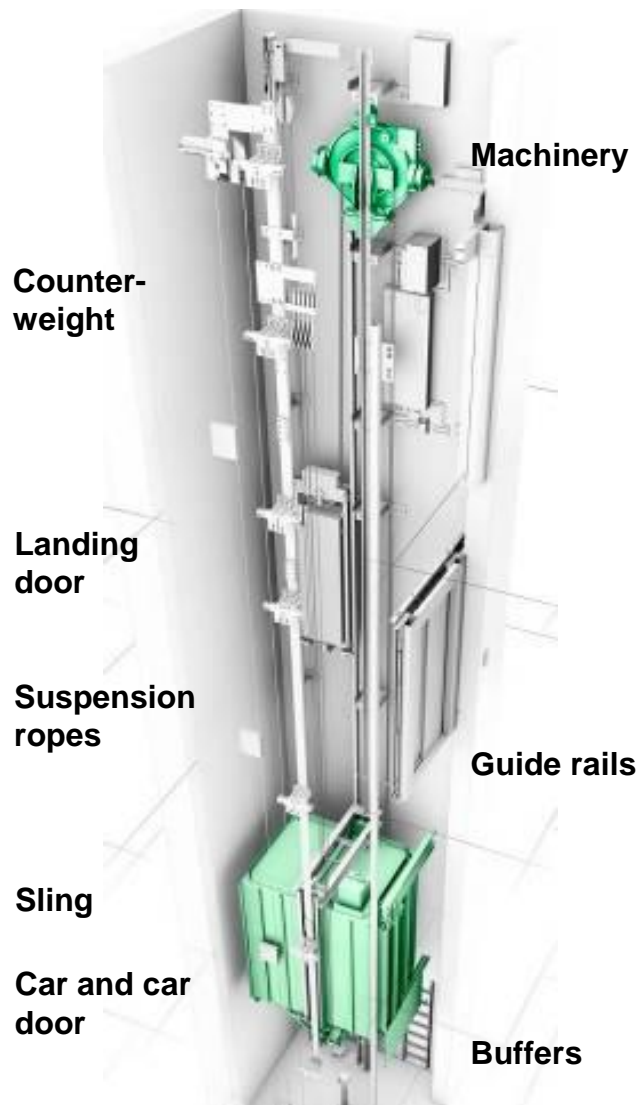
A blue rectangular text box containing the text "KONE's supply chain" in white, sans-serif font. The background of the slide is a photograph of a factory interior with blue metal shelving units and a cardboard box in the foreground.

KONE's supply chain

A white rectangular text box containing the text "Kunshan production facility" in blue, sans-serif font. The background of the slide is a photograph of a factory interior with blue metal shelving units and a cardboard box in the foreground.

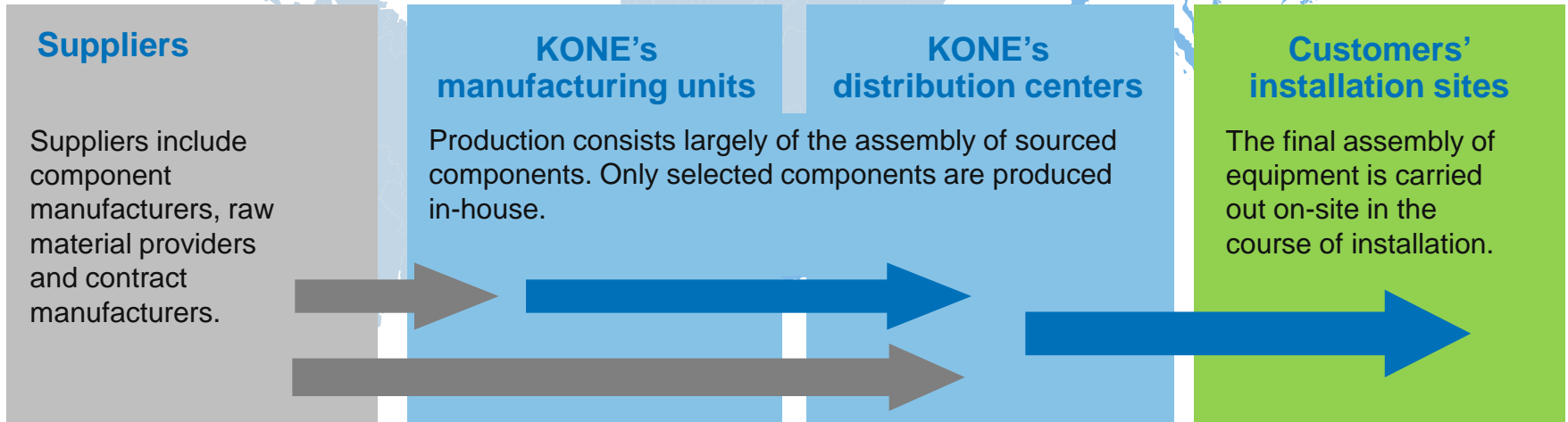
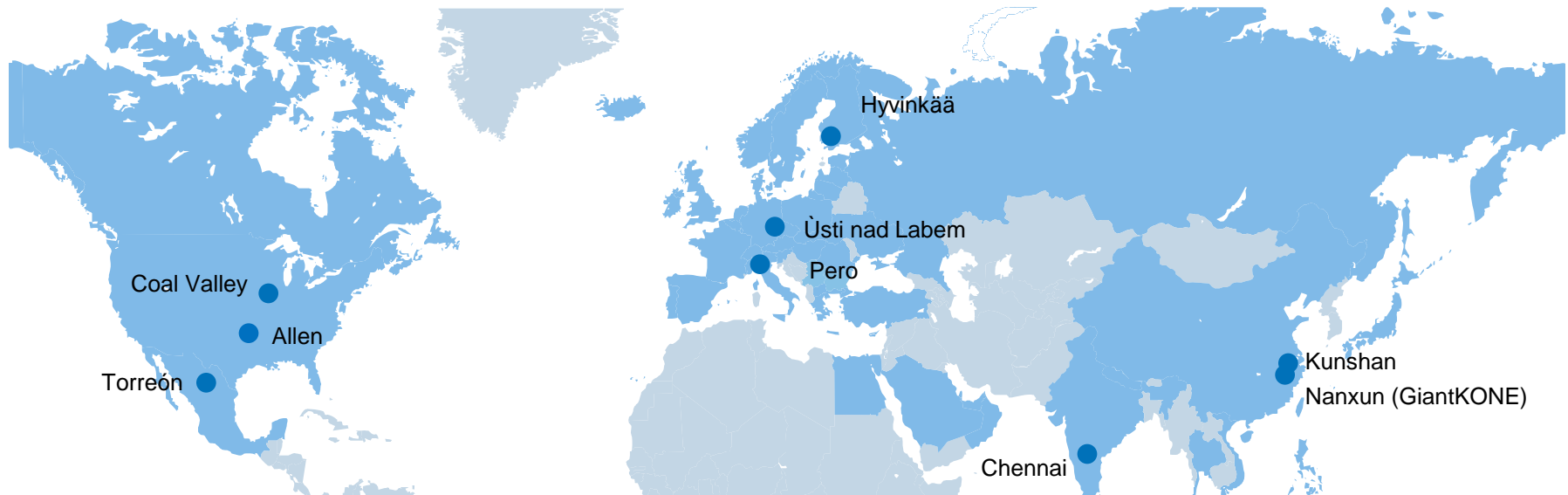
Kunshan production facility

Elevators are delivered as modules



Module	
1	Hoisting machinery
2	Guide rails
3	Hoist mechanics
4	Car sling
5	Counterweight filler bits
6	Elevator car
7	Electrification
8	Signalisation
9	Doors
10	Door operator
11	Intercom devices
12	Rope compensator
13	Fences and beams

A streamlined and capital-light network of production and distribution centers, focusing on assembly



A white rectangular text box with a thin blue border is positioned on the left side of the slide. It contains the text "KONE's supply chain" in a blue, sans-serif font. The background of the slide is a blurred photograph of a factory interior with blue metal shelving units and a worker in the distance.

KONE's supply chain

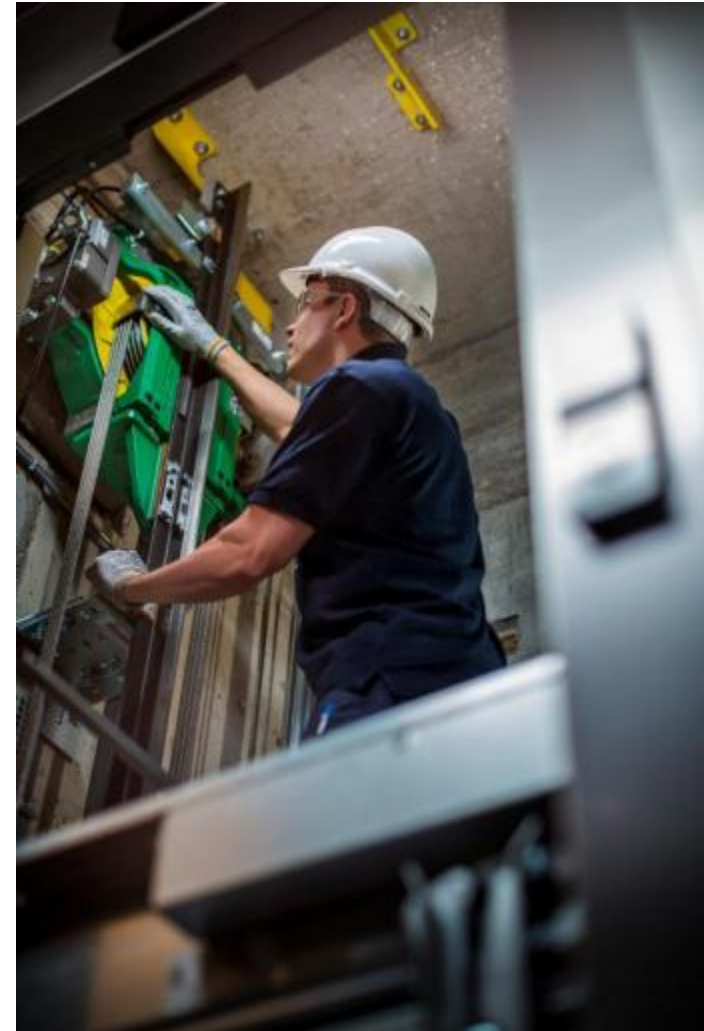
A blue rectangular text box with a thin white border is positioned on the left side of the slide, below the first text box. It contains the text "Kunshan production facility" in a white, sans-serif font. The background of the slide is a blurred photograph of a factory interior with blue metal shelving units and a worker in the distance.

Kunshan production facility

Overview of KONE's Kunshan factory



- The new Kunshan factory opened 2013 and is KONE's largest manufacturing facility globally for elevators and escalators
- Total headcount is over 2,000 at the Kunshan site
- Flexible operation according to actual demand
- R&D center with the highest elevator test tower in China to be opened soon



The Kunshan manufacturing facility consists of four separate factories



1. Test tower
2. Offices
3. Electrification factory
4. Escalator factory
5. Car factory
6. Machine factory

Machine factory



Production area: 8,200m²

Three production lines

Car factory



Production area:
16,000m²

Automated & semi-
automated production lines

Escalator factory



Production area:
18,800m²

Standard & heavy-duty
escalator production



Production area: 8,600m²

Production of electrification systems for elevators and escalators

Safety guidelines for the factory visit



- We will tour the factory in three groups led by KONE personnel
- Two factories will be visited in a golf cart, two by foot
- No safety shoes or helmet will be used during this visit – please stay strictly in the designated area and follow the instructions of the group leader
- Please do not take photographs inside the factories. Photography is allowed outside.





Dedicated to People Flow™

