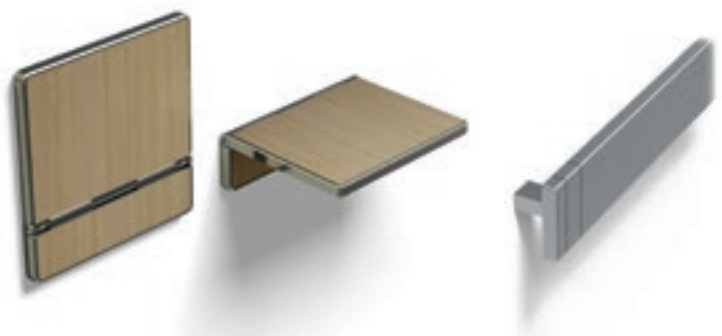
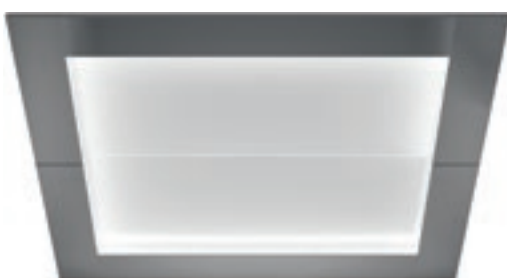
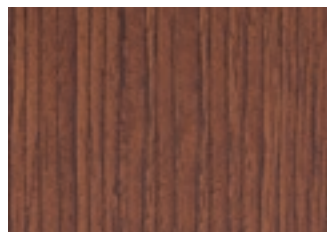
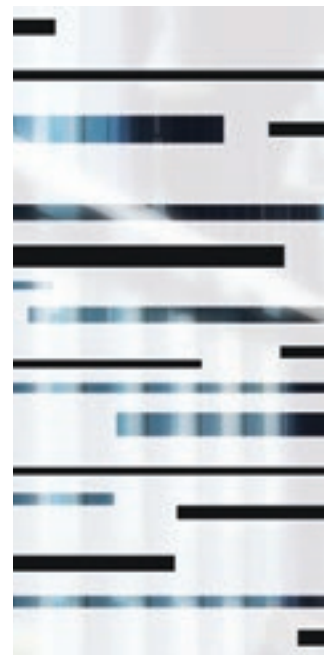
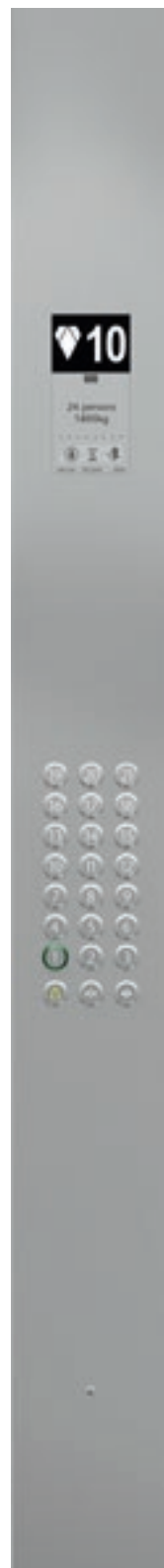


The background of the entire page is a photograph of an elevator interior. The elevator has a glass wall and a metal handrail. Through the glass, a view of a blue ocean and distant mountains under a blue sky with white clouds is visible. The floor of the elevator is a light-colored, polished material.

MATERIALS AND ACCESSORIES

KONE Marine design collection

CREATING AN ELEVATOR	4
WALL FINISHES	6
FLOOR FINISHES	9
FRONT WALL FINISHES	10
CAR / LANDING DOOR FINISHES	11
SIGNALIZATIONS	12
DESTINATION CONTROL SYSTEM LANDING DEVICES	14
INFOSCREENS	15
MIRRORS	15
CEILINGS	16
HANDRAILS	18
SEATS	19
BUFFER RAILS	19
SKIRTING	19



CREATING THE PERFECT ELEVATOR

When it comes to creating a consistent look and feel throughout your vessel, elevators play a key role. By freely combining KONE's flexible and versatile selection of materials and accessories, you can create an elevator interior that matches your vessel's design perfectly.

HOW TO CREATE YOUR CUSTOM ELEVATOR DESIGN

- ### 1 Choose the combination of wall, floor, and door material

Our wide range of available choices ensures that you can find the perfect combination to match your vessel's design, budget, and intended use requirements. For example, if durability and comfort are important, stone flooring is long-lasting and maintains its appearance even under heavy use, while colored or wood laminate wall finishes help to create a warm ambience inside the car. For a more exclusive look and feel, our new patterned steel and 3D glass finishes can really make your elevator stand out.
- ### 2 Select your ceiling design

KONE offers a wide range of different ceiling designs, equipped with modern and innovative lighting solutions that help create just the right atmosphere inside the elevator. Our ceilings are designed to give the best possible lighting quality while avoiding glare, ensuring every elevator trip is a pleasant and safe one. KONE's lighting solutions are also energy efficient – our LED lights use 80% less energy than traditional halogen lights.
- ### 3 Choose your accessories

Our accessories are designed to increase convenience for passengers, and include options such as handrails, seats, car operating panels, information screens, and tenant directories. KONE accessories have been designed to meet the specific requirements of different users and vessel types.

MATERIALS AND ACCESSORIES FOR ALL PURPOSES

This catalog presents our selection of elevator car interior materials and accessories. The options are grouped into two categories: standard and premium. Premium materials and accessories have been created using exclusive materials and components and are designated with **P**.

Each carefully selected item has been designed to be both visually appealing and functional. The collection also contains several elevator options for persons with limited accessibility and options for fulfilling the requirements related to e.g. hygiene and material handling.

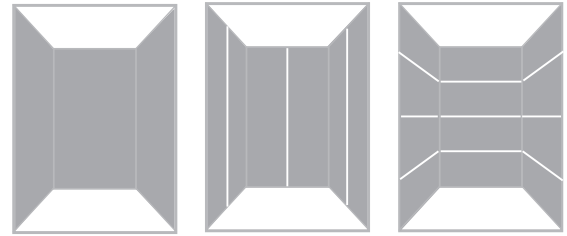
SELECTABLE CAR ELEMENTS



KONE's new, award-winning horizontal wall panel design is visually appealing and creates a spacious feeling inside the elevator cab.

Wall panel configuration

- All materials are available with vertical 2-panel per wall and horizontal 4-panel per wall designs
- Vertical 1-panel rear wall design. Side wall panel configuration will vary depending on car depth.
- **Material scaling & variability**
- Patterned images not to scale. Consult your sales representative for samples.
- Real wood laminates are made of natural materials so variation will occur.



Vertical 1-panel per wall

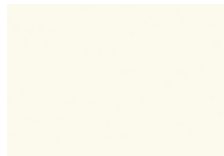
Vertical 2-panels per wall

Horizontal 4-panels per wall

Premium materials

- Premium materials are designated by **P**.

Painted steel



P50
Cloud White



P51
Misty Gray



P52
Sunny Yellow



P53
Dawn Red



P54
Sky Blue

Brushed stainless steel



F
Asturias Satin



SS1
Shangri-La Gold



H
Murano Mirror



SS2
Vegas Gold



SS3
Paris Black

Mirror polished stainless steel

Textured stainless steel



K
Scottish Quad



TS1
Flemish Linen



SS4
Aqua Weave



SS5
Golden Linen



SS6
Sunlit Twill

Etched stainless steel



ES1
Silver Diamond



ES2
Silver Bamboo

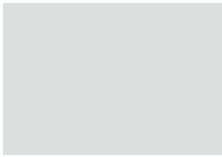


ES3
Silver High-rise



ES4
Golden Bamboo

Steel



Z
Zinc coated,
local paint or decoration

Coated steel



R30
Nordic Gray

Wet polished st st



A (AISI316)
Acid proof

Metallic laminate



L200
Oriental Gold



L201
Oriental Bronze
Due to the special characteristics
of this material, the appearance
of brush marks may vary between
wall panels. Alignment of these
markings cannot be guaranteed.

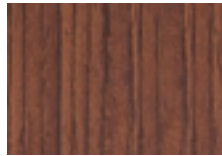
Laminate



L202
Hazel Oak



L203
Almond Oak



L204
Cherry Oak



L205
Ebony Oak



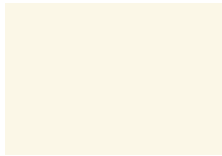
L206
Mandarin Orange



L207
Lime Green



L208
Lotus Blue



L209
Snowberry White



L226
Misty Gray



L227
Sunny Yellow



L228
Dawn Red

Printed laminate



L210
Graphic Bamboo



L211
Chennai Lights



L212
Color Cool



L213
Shanghai Lights

3D laminate



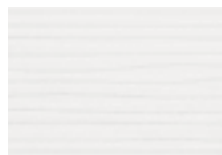
L214
Aqua Blue

P



L215
Aqua Black

P



L216
Windwall White

P



L217
Windwall Orange

P

Real wood laminate



L219
Oak

P



L220
Walnut

P



L221
Wenge

P



L222
Black Oak

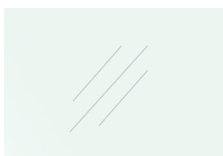
P



L223
Wild Wenge

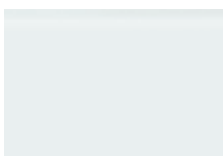
P

Transparent glass



TW1
Glass

Colored glass



GW1
Siberian Glaze P



GW4
Manhattan Glaze P

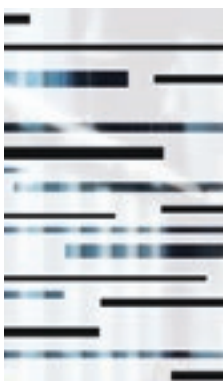


GW10
Jaipur Glaze P



GW11
Soho Glaze P

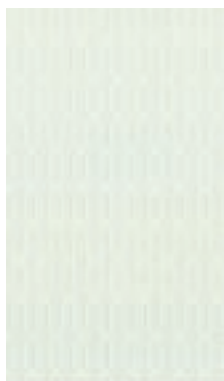
Patterned glass



G5*
Silver Flow P



G6
White Diamond P



G7
Silver Chain P



G9
Night High-rise P



G11
Classic Bamboo P



G12**
London Lights P

Note

* These patterns on the glass are mirrors.

** These patterned glasses are transparent.

Metal plate

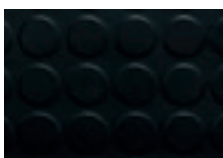


AL
Aluminum

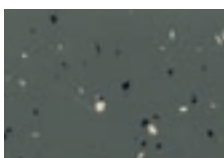


SS
Stainless steel

Rubber



RC6
Dallas Black



RC20
Smoke Gray



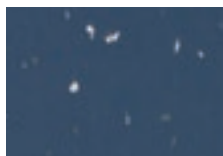
RC21
Denver Gray



RC22
Shell Gray

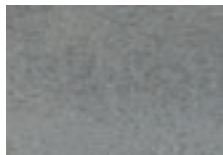


RC23
Coral Red



RC24
Dusk Blue

Vinyl



VF20
Ash Gray



VF22
Carbon Gray



VF23
Steel Gray

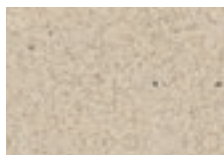


VF25
Flakey Gray

Stone



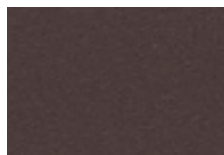
SF30
Chalk White



SF31
Grainy Sand



SF32
Diorite Black



SF33
Brass Brown



SF36
Spring Sand

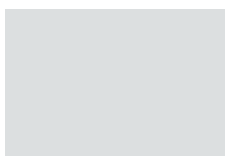
P

Local floor



0
Raw surface for local
finishing

Steel



Z
Raw surface
for local finishing

Coated steel



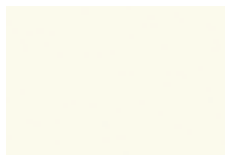
R30
Nordic Gray

Wet polished stainless steel



A (AISI316)
Acid proof P

Painted steel



P50
Cloud White



P51
Misty Gray

Textured stainless steel



K
Scottish Quad



TS1
Flemish Linen



SS4
Aqua Weave

Brushed stainless steel



F
Asturias Satin



SS1
Shangri-La Gold P

Mirror polished stainless steel



H
Murano Mirror

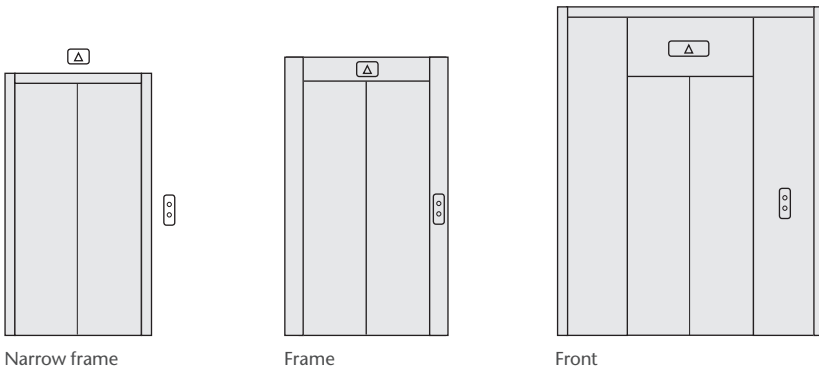


SS2
Vegas Gold P



SS3
Paris Black P

Landing door types



Note:
Finishing availability varies according to door type. Consult your sales representative for more information.

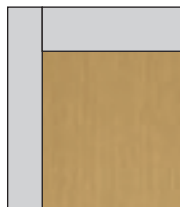
Stainless steel



F
Asturias Satin



H
Murano Mirror **P**



SS1
Shangri-La Gold **P**

Textured stainless steel



K
Scottish Quad



TS1
Flemish Linen

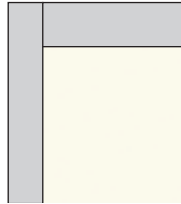


SS4
Aqua Weave

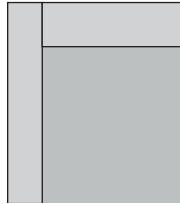
Coated steel



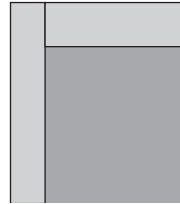
R30
Nordic Gray



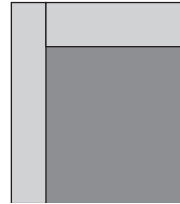
P50
Cloud White



P51
Misty Gray



P55
Thunder Gray
Landing door only



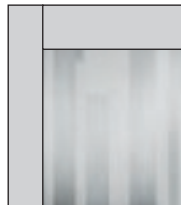
P
Painted steel

Painted steel

Etched stainless steel



ES2
Silver Bamboo **P**

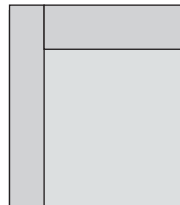


ES3
Silver High-rise **P**



ES5
Brushed Bamboo **P**

Steel



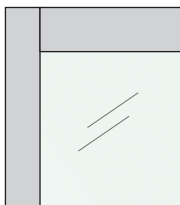
Z
Raw surface for local finishing

Wet polished stainless steel



A (AISI316)
Acid proof **P**

Glass



TW1
Transparent

Patterned transparent glass



G14
White Bamboo **P**

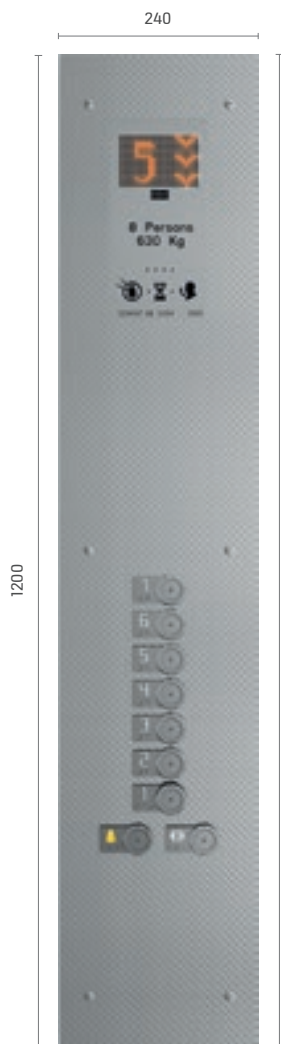


G12
London Lights **P**

KSS 140

Flush mounted, vandal resistant signalization

Available with vertical paneling only



KSC 143
Partial height

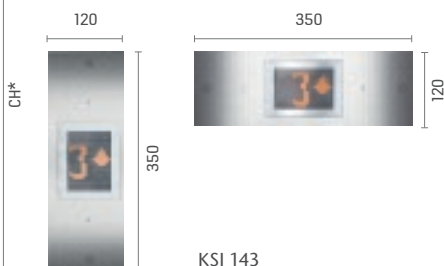
KSC 143
Full height
CH* to be extended

Car operating panel (COP)

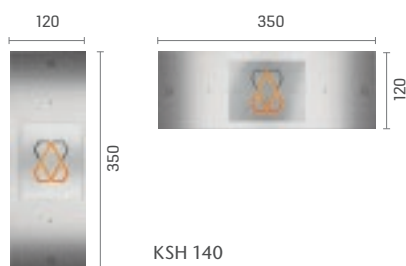
Faceplate finishings:
Scottish Quad (K) stainless steel or
Asturias Satin (F) stainless steel

Displays: Scrolling dot matrix

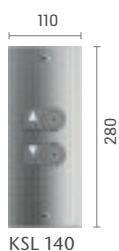
Landing devices



KSI 143



KSH 140

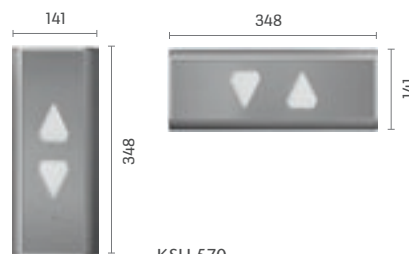


KSL 140

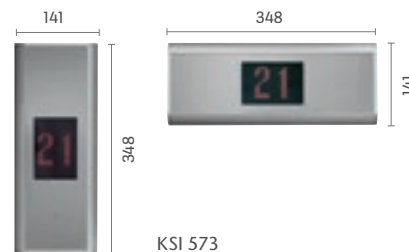
KSS 570

Surface mounted signalization

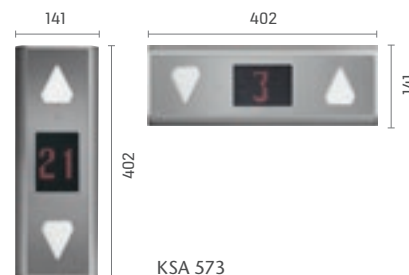
Landing devices



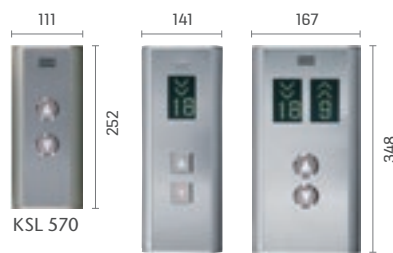
KSH 570



KSI 573



KSA 573



KSL 570

KSC 573/575



KSL 572
Simplex



KSL 572
Duplex

*** Note**

The exact height of the COP depends on the car height (CH) and the selected ceiling option.

KSS 670

Flush mounted signalization

Partial height available



Car operating panel (COP)

Faceplate finishings:

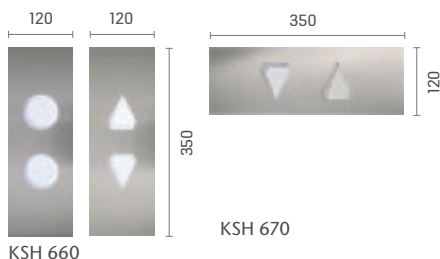
Asturias Satin (F)
Murano Mirror (H)
Golden Mirror (HTIN) **P**

Displays:

KSC 683: Scrolling dot matrix
KSC 685: Black and white LCD

Landing devices

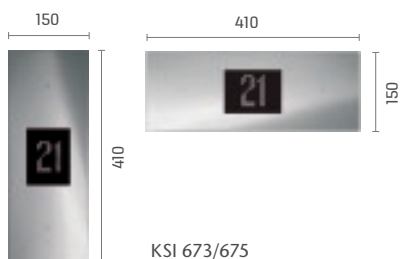
Custom dimensions available



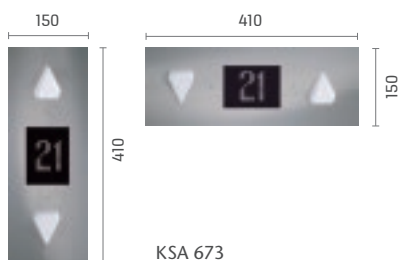
KSH 660

KSH 670

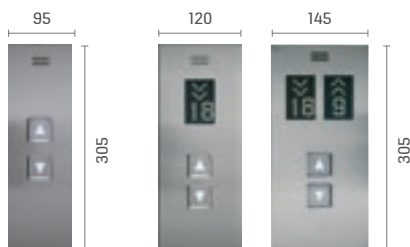
CH*



KSI 673/675



KSA 673



KSL 670

KSL 672
Simplex

KSL 672
Duplex

KSC 673/675
Full height,
available also with
partial height at
1090 mm

KSS 970

Flush mounted signalization

Partial height available



Car operating panel (COP)

Faceplate finishings:

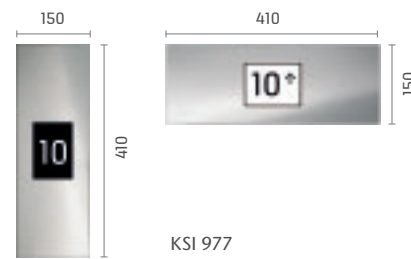
Asturias Satin (F)
Murano Mirror (H)
Golden Mirror (HTIN) **P**

Displays:

KSC 987: LCD Display

Landing devices

Custom dimensions available



KSI 977

CH*



KSI 983/987



KSL 670

KSC 977 **P**
Full height,
available also with
partial height at
1090 mm

* Note

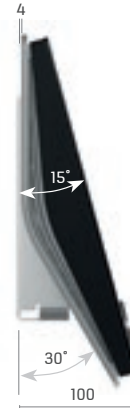
Custom-made touchscreen car operating panels are also available.
Please consult your KONE sales representative.

KSS 800 series signalization for elevators with KONE Destination

Touchscreen destination operating panel (DOP)

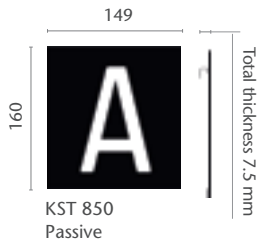


KSP 858
Also available with pedestal



KSP 858 pedestal

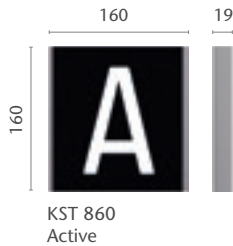
Elevator identifier (EID)



KST 850
Passive



KST 880
Passive



KST 860
Active



KST 890
Active

Hall lantern (HL)

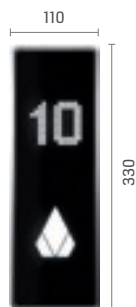


KSH D20

Hall lantern indicator (HI)

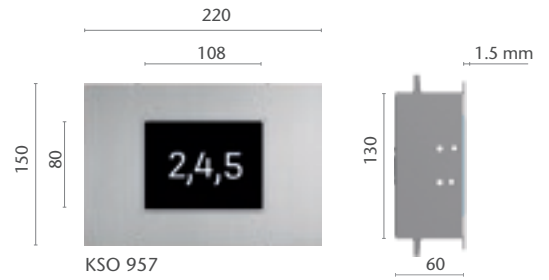


KSI D41



KSI D42

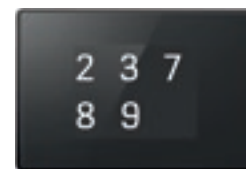
Destination indicator at landing (DIN L)



KSO 957



KSO 857
Natural color anodized



KSO 857
Black color anodized

Note

The car operating panel may be selected from the KSS670 or KSS970 series.
Please consult your KONE sales representative for custom made operating panels.
Conventional landing call devices available for the floors without DOPs.

Digital info screens



Infoscreen Standard
 8.4" display, dimensions 200 x 154 x 11 mm or
 15" display, dimensions 327 x 254 x 12 mm
 Surface mounted
 Aspect ratio 4:3



Infoscreen Premium P
 15.6" display, dimensions 390 x 238 x 28 mm
 Flush mounted
 Aspect ratio 16:9

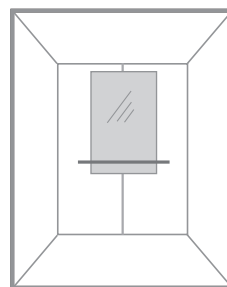
Frame finishing for surface mounted screen:
 brushed or polished stainless steel.

Additional features may be available.
 Consult your sales representative for
 more information.

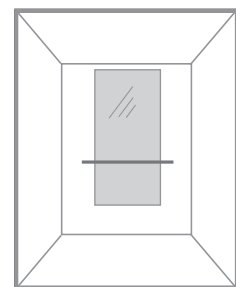


SIZES AND POSITIONING

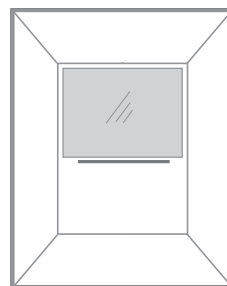
Mirrors can be located on the rear and side walls of the elevator car.
 Mirror and handrail dimensions are determined by the wall width.
 Please consult your KONE sales representative for details.



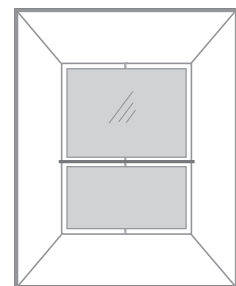
MR1
 Partial width/Partial height



MR1
 Partial width/Mid height



MR1
 Full width/Partial height **P**



MR1
 Full width/Full height **P**



Type: **CL88**
 Finishings: Asturias Satin (F)
 Cloud White (P50)
 Murano Mirror (H) **P**
 Lighting: LED spot lights, round



Type: **CL94**
 Finishings: Asturias Satin (F)
 Cloud White (P50)
 Murano Mirror (H) **P**
 Lighting: T5 fluorescent tubes



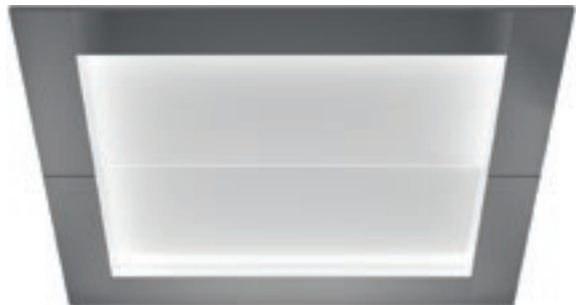
Type: **CL95**
 Frame finishing: Asturias Satin (F)
 Murano Mirror (H) **P**
 Center panels: Cloud White (P50) painted steel
 Lighting: T5 fluorescent tubes



Type: **CL97**
 Finishing: Asturias Satin (F)
 Murano Mirror (H) **P**
 Shangri-La Gold (SS1) **P**
 Lighting: LED spot lights, square



Type: **CL98**
 Finishing: Asturias Satin (F)
 Murano Mirror (H) **P**
 Lighting: LED spot lights, rectangular



Type: **CL104**
 Frame finishing: Asturias Satin (F)
 Murano Mirror (H) **P**
 Center panels: Cloud White (P50) painted steel
 Lighting: T5 fluorescent tubes



Type: **CL151** **P**
 Frame finishings: Asturias Satin (F)
 Shangri-La Gold (SS1)
 Lighting: LED panel with frosted white diffuser, plain or with graphics.

Graphic options for LED panel



1 Geometric



2 High-Rise



3 Bamboo



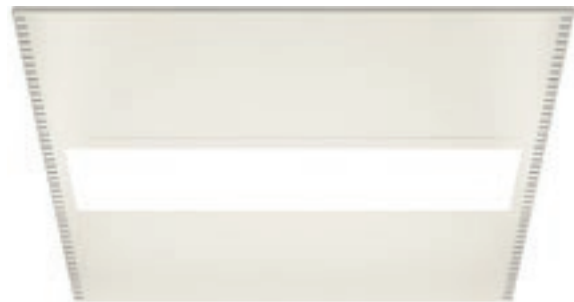
Type: **CL162** P
 Finishings: Asturias Satin (F)
 Murano Mirror (H)
 Top panel: Cloud White (P50) painted steel
 Lighting: T5 Fluorescent tubes and LED spot lights, square



Type: **CL181** P
 Finishings: Asturias Satin (F)
 Murano Mirror (H)
 Shangri-La Gold (SS1)
 Vegas Gold (SS2)
 Lighting: LED
 See below for actual CL181 ceiling installed in car and page 23 for full car image.



Type: **CL193** P
 Frame finishing: Asturias Satin (F)
 Center panels: Cloud White (P50) painted steel
 Lighting: T5 fluorescent tubes



Type: **LF1**
 Frame finishing: Asturias Satin (F)
 Cloud White (P50) painted steel
 Misty Gray (P51) painted steel
 Lighting: T5 fluorescent tubes



Actual CL181 ceiling installed in car



CL181



HR61*
Round
Finishings:
Brushed stainless steel (F)
Mirror polished stainless steel (H) **P**



HR62
Square
Finishings:
Brushed stainless steel (F)
Mirror polished stainless steel (H) **P**



HR63 **P**
Flat
Finishings:
Brushed stainless steel (F)
Mirror polished stainless steel (H)



HR64*
Round, bent ends
Finishings:
Brushed stainless steel (F)
Mirror polished stainless steel (H) **P**
Golden brushed stainless steel (SS1) **P**



HR65*
Triangular, bent ends
Finishings:
Brushed stainless steel (F)
Mirror polished stainless steel (H) **P**



HR81*
Round, sidewall and floor mounted
Finishings:
Brushed stainless steel (F)
Mirror polished stainless steel (H) **P**
Golden brushed stainless steel (SS1) **P**



F
Brushed stainless steel



H **P**
Mirror polished stainless steel



SS1 **P**
Golden brushed stainless steel



HR94 **P**
Round, bent ends
EN 81-71 Cat 2 compliant
Finishings:
Brushed stainless steel (F)



HR31
Round
Aluminum (LBE) with black
end caps



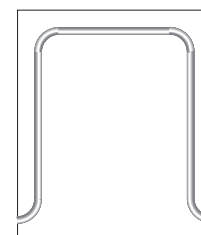
HR34
Round, bent ends
Aluminum (LBE) with
black end caps



HR71**
Round
Dark Wood with brushed
stainless steel fixings (WDF)

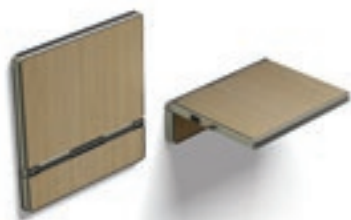


HR71**
Round
Light Wood with brushed
stainless steel fixings (WLF)

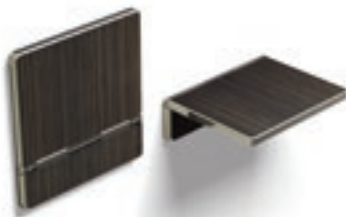


* Also available as a
continuous handrail

** Golden brushed stainless **P**
steel fixings also available



FS1
L202
Hazel Oak



FS1
L205
Ebony Oak



FS1
L224
Black Coal



BR1
Flemish Linen (TS1)



BR1
Lava Black (RC26)



BR1
Light Wood (WL) P



BR1
Dark Wood (WD) P



F
Asturias Satin



SS1
Shangri-La Gold P

KONE provides innovative and eco-efficient solutions for elevators, escalators, automatic building doors and the systems that integrate them with today's intelligent buildings.

We support our customers every step of the way: from design, manufacturing and installation to maintenance and modernization. KONE is a global leader in managing the smooth flow of people and goods throughout buildings.

This makes us a reliable partner throughout the life cycle of buildings. We are fast, flexible, and we have a well-deserved reputation as a technology leader, with such innovations as KONE MonoSpace®, KONE NanoSpace™ and KONE UltraRope®.

KONE employs over 55,000 dedicated experts to serve you globally and locally.

KONE CORPORATION

Head office

Kartanontie 1
P.O. Box 8
FI-00331 Helsinki
Finland
Tel. +358 (0)204 751

KONE Elevators Ltd/Marine

Hissikatu 3
PL 602
FI-05801 Hyvinkää
Finland
Tel. +358 (0)204 75 2300

Corporate offices

Keilasatama 3
P.O. Box 7
FI-02151 Espoo
Finland
Tel. +358 (0)204 751

www.kone-marine.com

www.kone.com